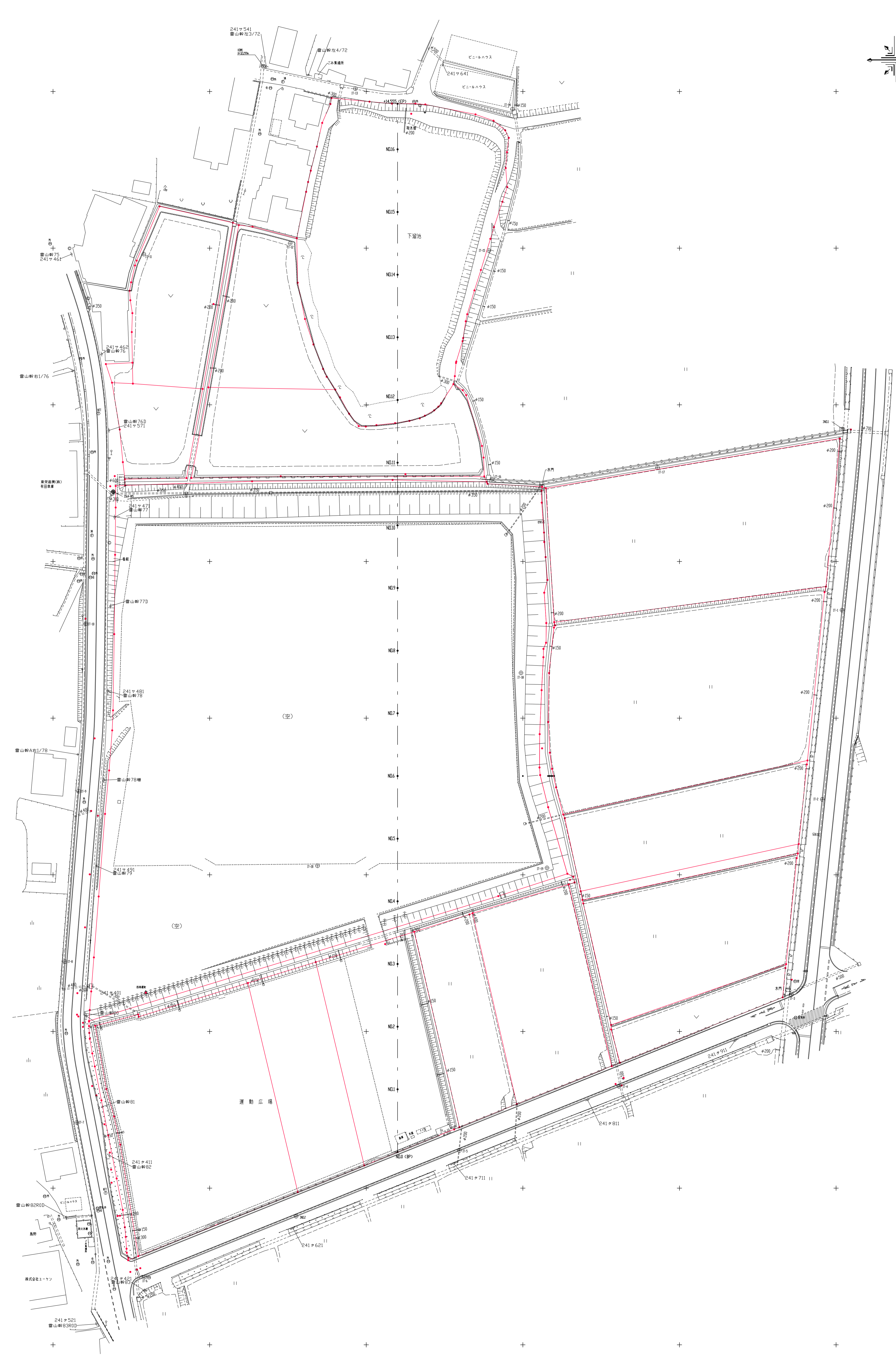
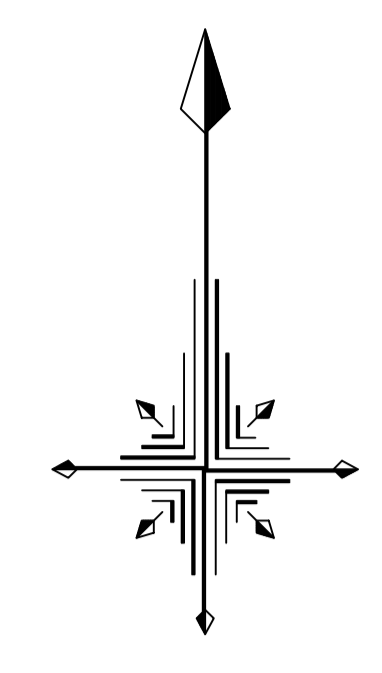
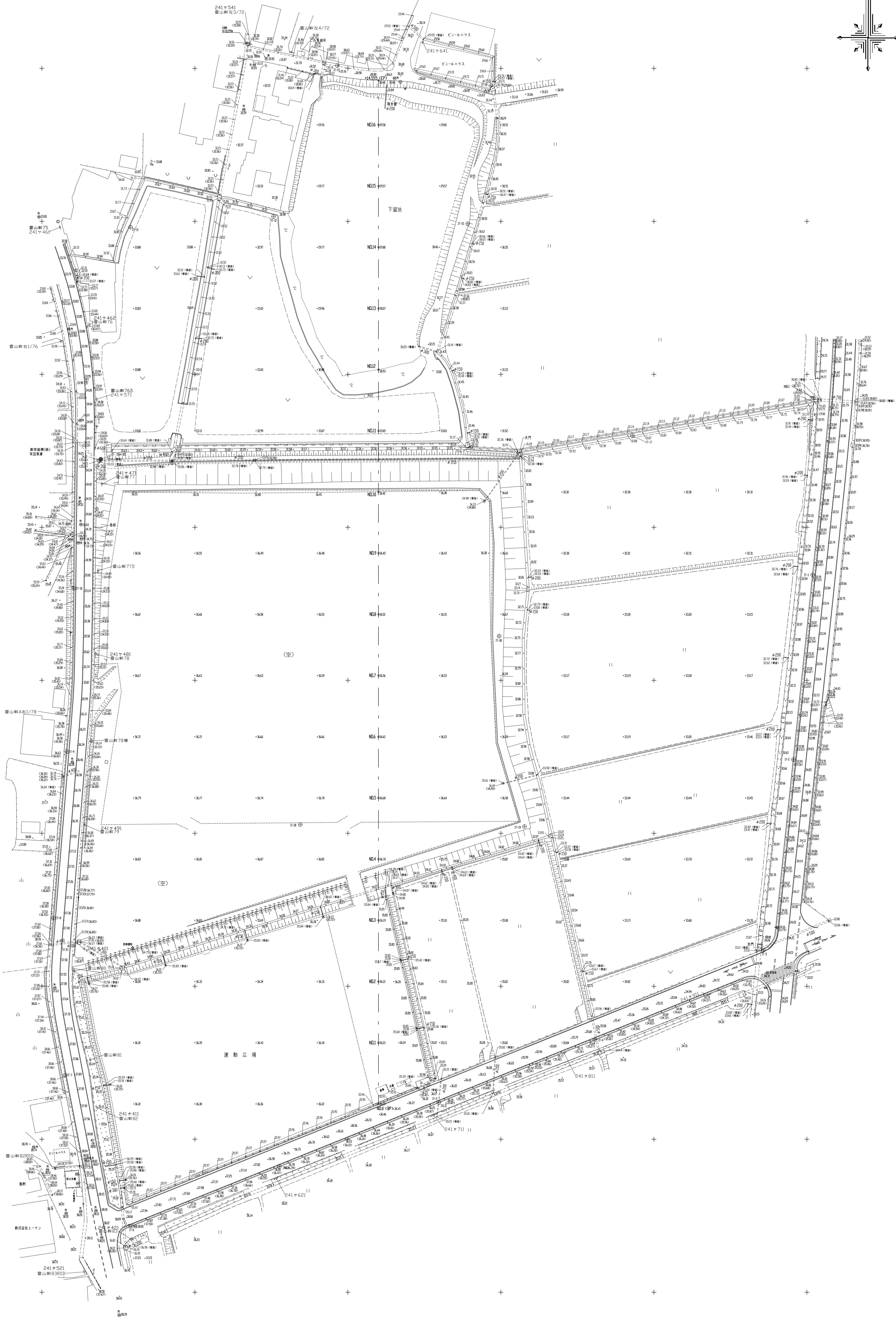
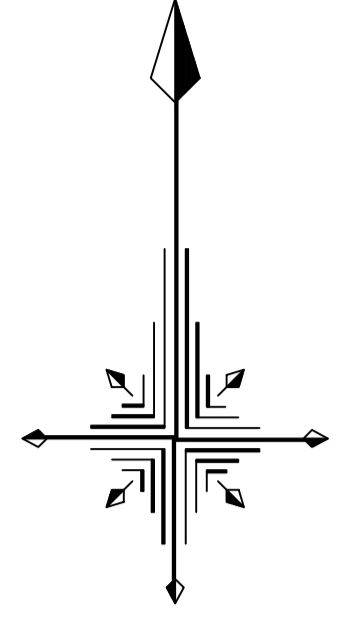


# 別紙2 敷地測量図



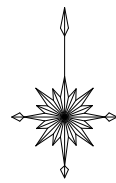
業務名	平成30年度 糸島市建設公団等整備事業用地測量業務	
図面名	平面図	図面番号
縮尺	S=1/500	1 / 1
測量 年月日	平成30年10月29日	
発注機関	福岡県 糸島市	



業務名	平成30年度 糸島市運動公園整備事業用地測量成果書	
図面名	平面図	図面番号
縮尺	S=1/500	1
測量 年月日	平成30年10月29日	1
発注機関	福岡県 糸島市	

# 確定測量図

1/500



## 世界測地系 平面直角座標系

復元の与点  
fukuoka2005.par Ver. 1.0.0002

種別	X座標	Y座標	備考
N07	60062.386	-72420.389	四等三角点
	59821.197	-72239.345	3級水準点

### 多角点座標一覧表

点名	X座標	Y座標	備考
TA	59377.715	-72425.928	引張点
TB	60032.813	-72238.474	引張点
TT1-1	59990.295	-72374.196	多角点
TT1-2	60018.723	-72321.947	多角点
TT1-3	60038.919	-72271.620	多角点
TT2-5	60282.167	-72338.740	多角点
TT2-6	60227.253	-72430.297	多角点
TT2-7	60181.738	-72439.612	多角点
TT2-8	60118.854	-72435.665	多角点
TT3-1	60077.891	-72343.980	多角点
TT3-2	60038.383	-72294.922	多角点
TT3-3	60140.363	-72293.864	多角点
TT3-4	60179.617	-72289.649	多角点
TT3-6	60227.876	-72337.489	多角点
TENOKI-A	60051.455	-72440.439	多角点

※ 既設以外はすべて新設

記号	説明
○	境界線
●	金属標 真鍮
○	コンクリート杭
○	プラスチック杭
○	金属標
○	木杭
○	ベッキ

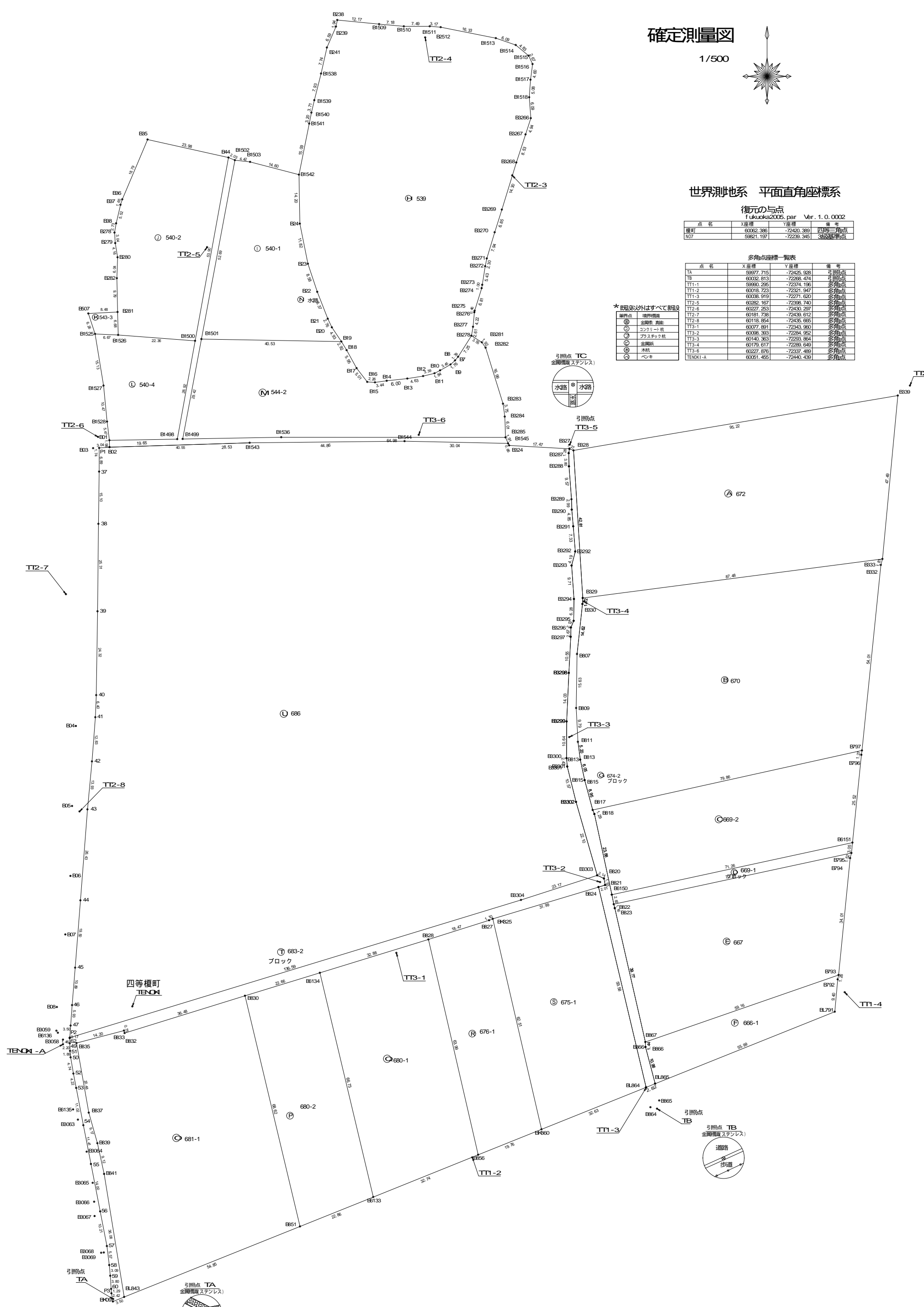


Table with columns: NO, X\_n, Y\_n, Y\_{n+1} - Y\_{n-1}, X\_n \* (Y\_{n+1} - Y\_{n-1}). Includes sub-header 672 and data rows for NO 8339 to 8328.

Table with columns: NO, X\_n, Y\_n, Y\_{n+1} - Y\_{n-1}, X\_n \* (Y\_{n+1} - Y\_{n-1}). Includes sub-header 670 and data rows for NO 8333 to 8329.

Table with columns: NO, X\_n, Y\_n, Y\_{n+1} - Y\_{n-1}, X\_n \* (Y\_{n+1} - Y\_{n-1}). Includes sub-header 669-2 and data rows for NO 8797 to 8817.

Table with columns: NO, X\_n, Y\_n, Y\_{n+1} - Y\_{n-1}, X\_n \* (Y\_{n+1} - Y\_{n-1}). Includes sub-header 669-1 and data rows for NO 8615 to 8817.

Table with columns: NO, X\_n, Y\_n, Y\_{n+1} - Y\_{n-1}, X\_n \* (Y\_{n+1} - Y\_{n-1}). Includes sub-header 667 and data rows for NO 8785 to 8822.

Table with columns: NO, X\_n, Y\_n, Y\_{n+1} - Y\_{n-1}, X\_n \* (Y\_{n+1} - Y\_{n-1}). Includes sub-header 666-1 and data rows for NO 8793 to 8867.

Table with columns: NO, X\_n, Y\_n, Y\_{n+1} - Y\_{n-1}, X\_n \* (Y\_{n+1} - Y\_{n-1}). Includes sub-header 674-2 and data rows for NO 8328 to 8329.

Table with columns: NO, X\_n, Y\_n, Y\_{n+1} - Y\_{n-1}, X\_n \* (Y\_{n+1} - Y\_{n-1}). Includes sub-header 539 and data rows for NO 8238 to 81509.

Table with columns: NO, X\_n, Y\_n, Y\_{n+1} - Y\_{n-1}, X\_n \* (Y\_{n+1} - Y\_{n-1}). Includes sub-header 540-1 and data rows for NO 8152 to 824.

Table with columns: NO, X\_n, Y\_n, Y\_{n+1} - Y\_{n-1}, X\_n \* (Y\_{n+1} - Y\_{n-1}). Includes sub-header 540-2 and data rows for NO 835 to 844.

Table with columns: NO, X\_n, Y\_n, Y\_{n+1} - Y\_{n-1}, X\_n \* (Y\_{n+1} - Y\_{n-1}). Includes sub-header 543-3 and data rows for NO 8281 to 81506.

Table with columns: NO, X\_n, Y\_n, Y\_{n+1} - Y\_{n-1}, X\_n \* (Y\_{n+1} - Y\_{n-1}). Includes sub-header 540-4 and data rows for NO 801 to 81528.

Table with columns: NO, X\_n, Y\_n, Y\_{n+1} - Y\_{n-1}, X\_n \* (Y\_{n+1} - Y\_{n-1}). Includes sub-header 544-2 and data rows for NO 819 to 818.

Table with columns: NO, X\_n, Y\_n, Y\_{n+1} - Y\_{n-1}, X\_n \* (Y\_{n+1} - Y\_{n-1}). Includes sub-header 水渠 and data rows for NO 81499 to 81536.

Table with columns: NO, X\_n, Y\_n, Y\_{n+1} - Y\_{n-1}, X\_n \* (Y\_{n+1} - Y\_{n-1}). Includes sub-header 681-1 and data rows for NO 81843 to 8241.

Table with columns: NO, X\_n, Y\_n, Y\_{n+1} - Y\_{n-1}, X\_n \* (Y\_{n+1} - Y\_{n-1}). Includes sub-header 680-2 and data rows for NO 8851 to 8830.

Table with columns: NO, X\_n, Y\_n, Y\_{n+1} - Y\_{n-1}, X\_n \* (Y\_{n+1} - Y\_{n-1}). Includes sub-header 680-1 and data rows for NO 86133 to 86134.

Table with columns: NO, X\_n, Y\_n, Y\_{n+1} - Y\_{n-1}, X\_n \* (Y\_{n+1} - Y\_{n-1}). Includes sub-header 676-1 and data rows for NO 8856 to 8828.

Table with columns: NO, X\_n, Y\_n, Y\_{n+1} - Y\_{n-1}, X\_n \* (Y\_{n+1} - Y\_{n-1}). Includes sub-header 675-1 and data rows for NO 8K980 to 8K825.

Table with columns: NO, X\_n, Y\_n, Y\_{n+1} - Y\_{n-1}, X\_n \* (Y\_{n+1} - Y\_{n-1}). Includes sub-header 683-2 and data rows for NO 81843 to 8K09.

西南道路拓幅後

Table with columns: NO, X\_n, Y\_n, Y\_{n+1} - Y\_{n-1}, X\_n \* (Y\_{n+1} - Y\_{n-1}). Includes sub-header 686 and data rows for NO 81 to 802.

西南道路拓幅後